

# Capsule house **A3** Configuration



**Model:** A3

**Size(L\*W\*H):**

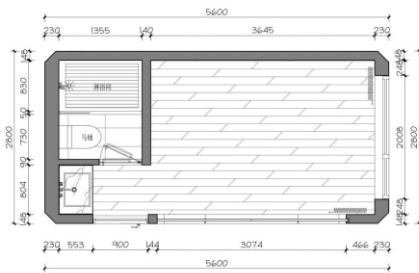
5600\*2800\*3100mm

**Floor Area:** 15.7m<sup>2</sup>

**Number of guests:** 2 people

**Maximum Power:** 6.7KW/11.2KW  
(with floor heating)

**Total Net Weight:** ≈4 tons



\*Product layout plan (for reference only)

## External protection system

Galvanized steel structure frame system

Fluorocarbon sprayed aluminum alloy shell module

Thermal insulation, waterproof and moisture-proof structural system

Three-layer hollow tempered floor-to-ceiling glass

Standard swing entrance door

## Guest control system

Lighting / Electric curtains

Intelligent access control system for hotels

## Product accessories

Support feet matched at the bottom of the product

Lifting rings / Transportation fixtures

## Interior Decoration

Integrated Ceiling and Wall Modules

Stone Crystal Wood-Grain Flooring

Bathroom Privacy Glass Door

Bathroom Shower Room/Marble/Tile Floor

Washbasin Counter/Sink/Bathroom Mirror

Coat Hooks/Shower Storage Shelf/Towel Rack

Branded Water Tap/Showerhead/Floor Drain

Whole-House Lighting System

Whole-House Water and Electricity System

Standard Color Blackout Curtains

Air Conditioner (Cooling & Heating)

Electric Water Heater

Ventilation System

Whole-House Mosquito-Proof Screen Doors

4-in-1 bathroom ceiling heater with light, heat, ventilation, and fan

Branded Smart Toilet

Electric Underfloor Heating

## Optional Configurations (Additional Costs Apply)

### 1. Insulation Upgrade

☐ UV-resistant Heat-insulating Explosion-proof Film (High-transparency/Privacy)

☐ Thickened Insulation Layer

### 2. Comfort Upgrade

☐ Smart Voice System

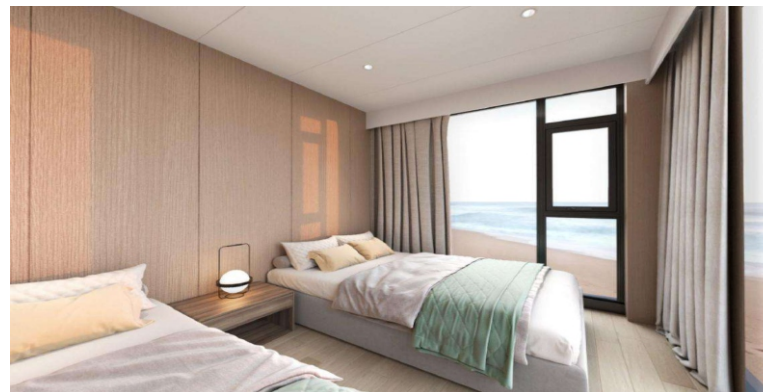
☐ Starry Sky Skylight

### 3. Accessories and Peripherals

☐ Entrance Staircase

☐ Triangular V-brace

☐ Entrance Platform



**\*Remarks:** All designs and specifications are for reference only. Changes may be made without prior notice.

# Capsule house **A5** Configuration



**Model:** A5

**Size(L\*W\*H):**

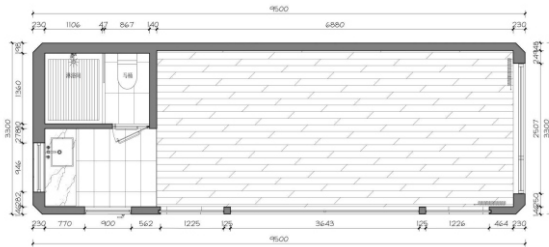
9500\*3300\*3300mm

**Floor Area:** 31.4m<sup>2</sup>

**Number of guests:** 2-4 people

**Maximum Power:** 6.7KW/11.2KW  
(with floor heating)

**Total Net Weight:** ≈6.5 tons



\*Product layout plan (for reference only)

## External protection system

Galvanized steel structure frame system

Fluorocarbon sprayed aluminum alloy shell module

Thermal insulation, waterproof and moisture-proof structural system

Three-layer hollow tempered floor-to-ceiling glass

Hollow laminated tempered glass skylight

Standard swing entrance door

## Guest control system

Lighting / Electric curtains

Intelligent access control system for hotels

## Product accessories

Support feet matched at the bottom of the product

Lifting rings / Transportation fixtures

## Interior Decoration

Integrated Ceiling and Wall Modules

Stone Crystal Wood-Grain Flooring

Bathroom Privacy Glass Door

Bathroom Shower Room/Marble/Tile Floor

Washbasin Counter/Sink/Bathroom Mirror

Coat Hooks/Shower Storage Shelf/Towel Rack

Branded Water Tap/Showerhead/Floor Drain

Whole-House Lighting System

Whole-House Water and Electricity System

Standard Color Blackout Curtains

Air Conditioner (Cooling & Heating)

Electric Water Heater

Ventilation System

Whole-House Mosquito-Proof Screen Doors

4-in-1 bathroom ceiling heater with light, heat, ventilation, and fan

Branded Smart Toilet

Electric Underfloor Heating

## Optional Configurations (Additional Costs Apply)

### 1. Insulation Upgrade

☐ UV-resistant Heat-insulating Explosion-proof Film (High-transparency/Privacy)

☐ Thickened Insulation Layer

### 2. Comfort Upgrade

☐ Custom bar counter

☐ Custom wardrobe

☐ Smart voice system

☐ Projector + projection screen

### 3. International Kitchen Integrated Customization

☐ Kitchen Cabinets/Wall Cabinets (Including Sink/Water Tap)

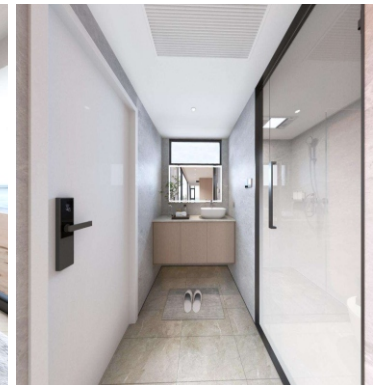
☐ Range Hood/Induction Cooker/Refrigerator

### 4. Accessories and Peripherals

☐ Entrance Staircase

☐ Triangular V-brace

☐ Entrance Platform



\***Remarks:** All designs and specifications are for reference only. Changes may be made without prior notice.

# Capsule house A7 Configuration



**Model:** A7

**Size(L\*W\*H):**

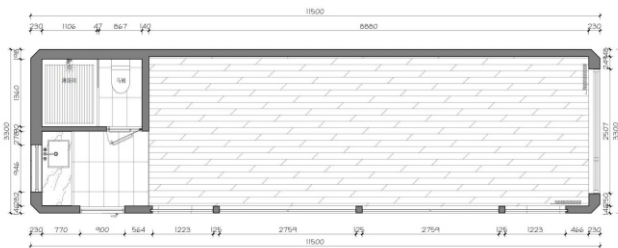
11500\*3300\*3300mm

**Floor Area:** 38.0m<sup>2</sup>

**Number of guests:** 2-4 people

**Maximum Power:** 9.9KW/15.4KW  
(with floor heating)

**Total Net Weight:** ≈8 tons



\*Product layout plan (for reference only)

## External protection system

Galvanized steel structure frame system

Fluorocarbon sprayed aluminum alloy shell module

Thermal insulation, waterproof and moisture-proof structural system

Three-layer hollow tempered floor-to-ceiling glass

Hollow laminated tempered glass skylight

Standard swing entrance door

## Guest control system

Lighting / Electric curtains

Intelligent access control system for hotels

## Product accessories

Support feet matched at the bottom of the product

Lifting rings / Transportation fixtures

## Interior Decoration

Integrated Ceiling and Wall Modules

Stone Crystal Wood-Grain Flooring

Bathroom Privacy Glass Door

Bathroom Shower Room/Marble/Tile Floor

Washbasin Counter/Sink/Bathroom Mirror

Coat Hooks/Shower Storage Shelf/Towel Rack

Branded Water Tap/Showerhead/Floor Drain

Whole-House Lighting System

Whole-House Water and Electricity System

Standard Color Blackout Curtains

Air Conditioner (Cooling & Heating)

Electric Water Heater

Ventilation System

Whole-House Mosquito-Proof Screen Doors

4-in-1 bathroom ceiling heater with light, heat, ventilation, and fan

Branded Smart Toilet

Electric Underfloor Heating

## Optional Configurations (Additional Costs Apply)

### 1. Insulation Upgrade

☐ UV-resistant Heat-insulating Explosion-proof Film (High-transparency/Privacy)

☐ Thickened Insulation Layer

### 2. Comfort Upgrade

☐ Custom bar counter

☐ Custom wardrobe

☐ Smart voice system

☐ Projector + projection screen

### 3. International Kitchen Integrated Customization

☐ Kitchen Cabinets/Wall Cabinets (Including Sink/Water Tap)

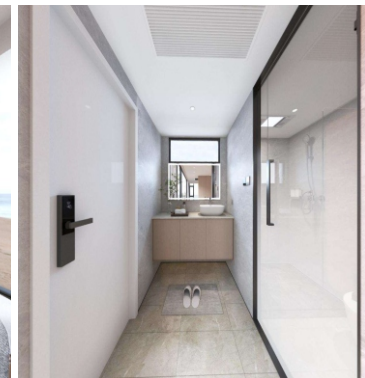
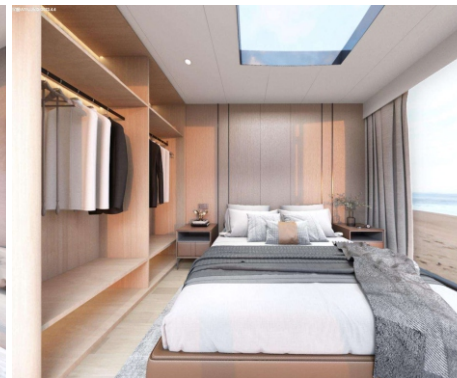
☐ Range Hood/Induction Cooker/Refrigerator

### 4. Accessories and Peripherals

☐ Entrance Staircase

☐ Triangular V-brace

☐ Entrance Platform



**\*Remarks:** All designs and specifications are for reference only. Changes may be made without prior notice.



# Capsule house **A9** Configuration



**Model:** A9

**Size(L\*W\*H):**

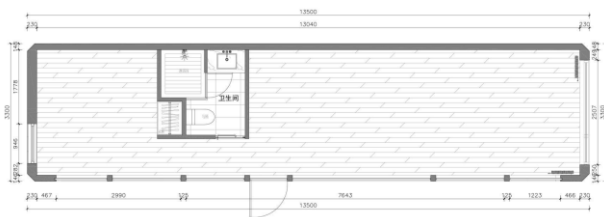
13500\*3300\*3300mm

**Floor Area:** 44.6m<sup>2</sup>

**Number of guests:** 2-4 people

**Maximum Power:** 11.5KW/17KW  
(with floor heating)

**Total Net Weight:** ≈10 tons



\*Product layout plan (for reference only)

## External protection system

Galvanized steel structure frame system

Fluorocarbon sprayed aluminum alloy shell module

Thermal insulation, waterproof and moisture-proof structural system

Three-layer hollow tempered floor-to-ceiling glass

Hollow laminated tempered glass skylight

Standard swing entrance door

## Guest control system

Lighting / Electric curtains

Intelligent access control system for hotels

## Product accessories

Support feet matched at the bottom of the product

Lifting rings / Transportation fixtures

## Interior Decoration

Integrated Ceiling and Wall Modules

Stone Crystal Wood-Grain Flooring

Bathroom Privacy Glass Door

Bathroom Shower Room/Marble/Tile Floor

Washbasin Counter/Sink/Bathroom Mirror

Coat Hooks/Shower Storage Shelf/Towel Rack

Branded Water Tap/Showerhead/Floor Drain

Whole-House Lighting System

Whole-House Water and Electricity System

Standard Color Blackout Curtains

Air Conditioner (Cooling & Heating)

Electric Water Heater

Ventilation System

Whole-House Mosquito-Proof Screen Doors

4-in-1 bathroom ceiling heater with light, heat, ventilation, and fan

Branded Smart Toilet

Electric Underfloor Heating

## Optional Configurations (Additional Costs Apply)

### 1. Insulation Upgrade

☐ UV-resistant Heat-insulating Explosion-proof Film (High-transparency/Privacy)

☐ Thickened Insulation Layer

### 2. Comfort Upgrade

☐ Custom bar counter

☐ Custom wardrobe

☐ Smart voice system

☐ Projector + projection screen

### 3. International Kitchen Integrated Customization

☐ Kitchen Cabinets/Wall Cabinets (Including Sink/Water Tap)

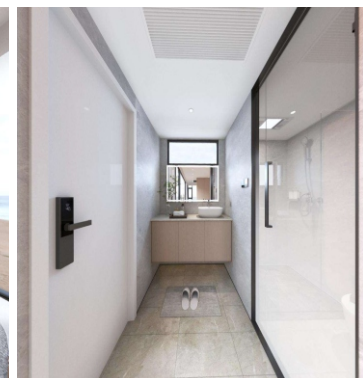
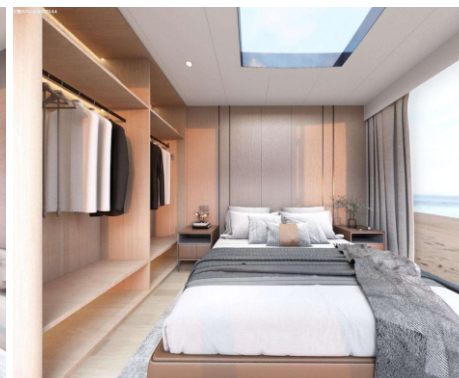
☐ Range Hood/Induction Cooker/Refrigerator

### 4. Accessories and Peripherals

☐ Entrance Staircase

☐ Triangular V-brace

☐ Entrance Platform



\*Remarks: All designs and specifications are for reference only. Changes may be made without prior notice.



# Capsule house **F7** Configuration



**Model:** F7

**Size(L\*W\*H):**

11500\*3300\*3300mm

**Floor Area:** 38.0m<sup>2</sup>

**Number of guests:** 2-4 people

**Maximum Power:** 9.9KW/15.4KW  
(with floor heating)

**Total Net Weight:** ≈8 tons



\*Product layout plan (for reference only)

## External protection system

Galvanized steel structure frame system

Fluorocarbon sprayed aluminum alloy shell module

Thermal insulation, waterproof and moisture-proof structural system

Three-layer hollow tempered floor-to-ceiling glass

Standard swing entrance door

## Guest control system

Lighting / Electric curtains

Intelligent access control system for hotels

## Product accessories

Support feet matched at the bottom of the product

Lifting rings / Transportation fixtures

## Interior Decoration

Integrated Ceiling and Wall Modules

Stone Crystal Wood-Grain Flooring

Bathroom Privacy Glass Door

Bathroom Shower Room/Marble/Tile Floor

Washbasin Counter/Sink/Bathroom Mirror

Coat Hooks/Shower Storage Shelf/Towel Rack

Branded Water Tap/Showerhead/Floor Drain

Whole-House Lighting System

Whole-House Water and Electricity System

Standard Color Blackout Curtains

Air Conditioner (Cooling & Heating)

Electric Water Heater

Ventilation System

Whole-House Mosquito-Proof Screen Doors

Lighting Ventilation Fan

Branded Smart Toilet

Electric Underfloor Heating

## Hard-Fitted Furniture

Wardrobe

Shoe Cabinet

## Optional Configurations (Additional Costs Apply)

### 1. Insulation Upgrade

☐ UV-resistant Heat-insulating Explosion-proof Film (High-transparency/Privacy)

☐ Thickened Insulation Layer

### 2. Comfort Upgrade

☐ Custom bar counter

☐ Custom wardrobe

☐ Smart voice system

☐ Projector + projection screen

### 3. International Kitchen Integrated Customization

☐ Kitchen Cabinets/Wall Cabinets (Including Sink/Water Tap)

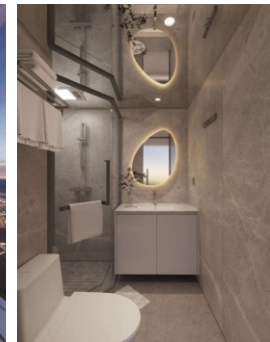
☐ Range Hood/Induction Cooker/Refrigerator

### 4. Accessories and Peripherals

☐ Entrance Staircase

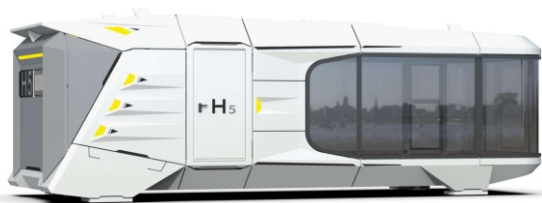
☐ Triangular V-brace

☐ Entrance Platform



\*Remarks: All designs and specifications are for reference only. Changes may be made without prior notice.

# Capsule house H5 Configuration



**Model:** H5

**Size(L\*W\*H):**

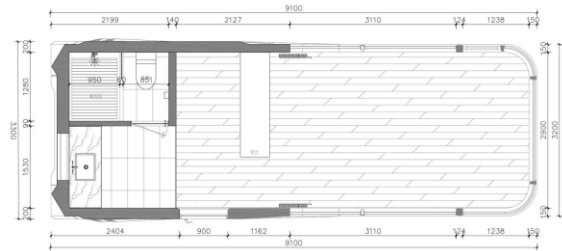
9100\*3300\*3400mm

**Floor Area:** 30.0m<sup>2</sup>

**Number of guests:** 2 people

**Maximum Power:** 10KW/15KW  
(with floor heating)

**Total Net Weight:** ≈7 tons



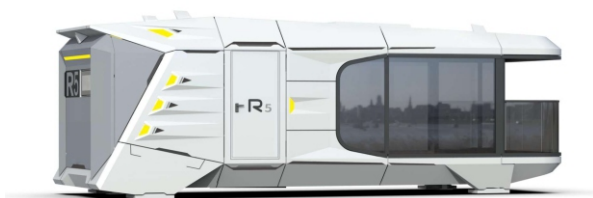
\*Product layout plan (for reference only)

External protection system	Interior Decoration	Optional Configurations (Additional Costs Apply)
Galvanized steel structure frame system	Integrated Ceiling and Wall Modules	<b>1. Insulation Upgrade</b> <input type="checkbox"/> UV-resistant Heat-insulating Explosion-proof Film (High-transparency/Privacy) <input type="checkbox"/> Thickened Insulation Layer
Fluorocarbon sprayed aluminum alloy shell module	Stone Crystal Wood-Grain Flooring	
Thermal insulation, waterproof and moisture-proof structural system	Bathroom Privacy Glass Door	
Three-layer hollow tempered floor-to-ceiling glass	Bathroom Shower Room/Marble/Tile Floor	<b>2. Comfort Upgrade</b> <input type="checkbox"/> Projector
Hollow laminated tempered glass skylight	Washbasin Counter/Sink/Bathroom Mirror	
Standard swing entrance door	Coat Hooks/Shower Storage Shelf/Towel Rack	
Guest control system	Branded Water Tap/Showerhead/Floor Drain	<b>3. Accessories and Peripherals</b> <input type="checkbox"/> Entrance Staircase <input type="checkbox"/> Triangular V-brace <input type="checkbox"/> Entrance Platform
Multi-Scenario Mode Function Panel	Whole-House Lighting System	
Lighting / Electric Curtains	Whole-House Water and Electricity System	
Smart Voice Control	Standard Color Blackout Curtains	
Hotel Intelligent Access Control System	Air Conditioner (Cooling & Heating)	
Product accessories	Electric Water Heater	
Support feet matched at the bottom of the product	Ventilation System	
Lifting rings / Transportation fixtures	Whole-House Mosquito-Proof Screen Doors	
	4-in-1 bathroom ceiling heater with light, heat, ventilation, and fan	
	Branded Smart Toilet	
	Electric Underfloor Heating	
	Hard-Fitted Furniture	
	Bar counter	

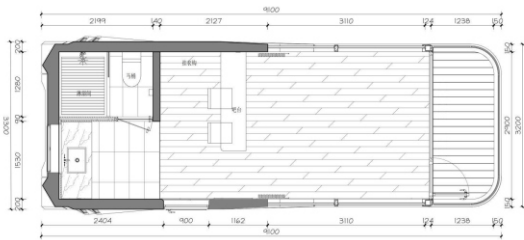


\*Remarks: All designs and specifications are for reference only. Changes may be made without prior notice.

# Capsule house R5 Configuration



**Model:** R5  
**Size(L\*W\*H):**  
9100\*3300\*3400mm  
**Floor Area:** 30.0m<sup>2</sup>  
**Number of guests:** 2 people  
**Maximum Power:** 10KW/15KW  
(with floor heating)  
**Total Net Weight:** ≈7 tons



\*Product layout plan (for reference only)

External protection system	Interior Decoration	Optional Configurations (Additional Costs Apply)
Galvanized steel structure frame system	Integrated Ceiling and Wall Modules	<b>1. Insulation Upgrade</b> <input type="checkbox"/> UV-resistant Heat-insulating Explosion-proof Film (High-transparency/Privacy) <input type="checkbox"/> Thickened Insulation Layer
Fluorocarbon sprayed aluminum alloy shell module	Stone Crystal Wood-Grain Flooring	
Thermal insulation, waterproof and moisture-proof structural system	Bathroom Privacy Glass Door	
Three-layer hollow tempered floor-to-ceiling glass	Bathroom Shower Room/Marble/Tile Floor	<b>2. Comfort Upgrade</b> <input type="checkbox"/> Projector
Hollow laminated tempered glass skylight	Washbasin Counter/Sink/Bathroom Mirror	
Painted stainless steel swing entrance door	Coat Hooks/Shower Storage Shelf/Towel Rack	
Panoramic balcony	Branded Water Tap/Showerhead/Floor Drain	<b>3. Accessories and Peripherals</b> <input type="checkbox"/> Entrance Staircase <input type="checkbox"/> Triangular V-brace <input type="checkbox"/> Entrance Platform
Guest control system	Whole-House Lighting System	
Multi-Scenario Mode Function Panel	Whole-House Water and Electricity System	
Lighting / Electric Curtains	Standard Color Blackout Curtains	
Smart Voice Control	Air Conditioner (Cooling & Heating)	
Hotel Intelligent Access Control System	Electric Water Heater	
Product accessories	Ventilation System	
Support feet matched at the bottom of the product	Whole-House Mosquito-Proof Screen Doors	
Lifting rings / Transportation fixtures	4-in-1 bathroom ceiling heater with light, heat, ventilation, and fan	
	Branded Smart Toilet	
	Electric Underfloor Heating	
	Hard-Fitted Furniture	
	Bar counter	

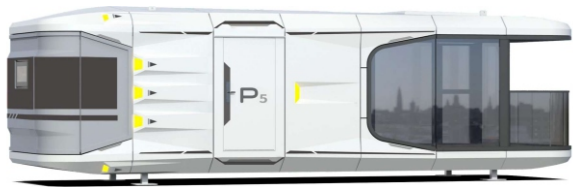


\*Remarks: All designs and specifications are for reference only. Changes may be made without prior notice.





# Capsule house P5 Configuration



**Model:** P5

**Size(L\*W\*H):**

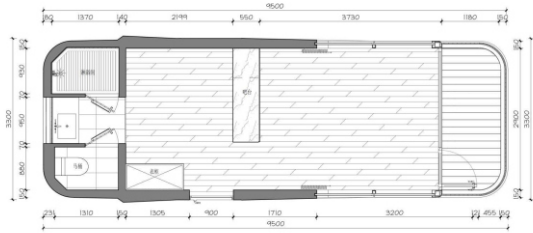
9500\*3300\*3200mm

**Floor Area:** 31.4m<sup>2</sup>

**Number of guests:** 2 people

**Maximum Power:** 7.5KW/12KW  
(with floor heating)

**Total Net Weight:** ≈6.5 tons



\*Product layout plan (for reference only)

External protection system	Interior Decoration	Optional Configurations (Additional Costs Apply)
Galvanized steel structure frame system	Integrated Ceiling and Wall Modules	<b>1. Insulation Upgrade</b>
Fluorocarbon sprayed aluminum alloy shell module	Stone Crystal Wood-Grain Flooring	<input type="checkbox"/> UV-resistant Heat-insulating Explosion-proof Film (High-transparency/Privacy)
Thermal insulation, waterproof and moisture-proof structural system	Bathroom Privacy Glass Door	<input type="checkbox"/> Thickened Insulation Layer
Three-layer hollow tempered floor-to-ceiling glass	Bathroom Shower Room/Marble/Tile Floor	
Hollow laminated tempered glass skylight	Washbasin Counter/Sink/Bathroom Mirror	<b>2. Comfort Upgrade</b>
Painted stainless steel swing entrance door	Coat Hooks/Shower Storage Shelf/Towel Rack	<input type="checkbox"/> Projector
Panoramic balcony	Branded Water Tap/Showerhead/Floor Drain	
	Whole-House Lighting System	<b>3. International Kitchen Integrated Customization</b>
<b>Guest control system</b>	Whole-House Water and Electricity System	<input type="checkbox"/> Kitchen Cabinets/Wall Cabinets (Including Sink/Water Tap)
Multi-Scenario Mode Function Panel	Standard Color Blackout Curtains	<input type="checkbox"/> Range Hood/Induction Cooker/Refrigerator
Lighting / Electric Curtains	Air Conditioner (Cooling & Heating)	
Smart Voice Control	Electric Water Heater	<b>4. Accessories and Peripherals</b>
Hotel Intelligent Access Control System	Ventilation System	<input type="checkbox"/> Entrance Staircase
	Whole-House Mosquito-Proof Screen Doors	<input type="checkbox"/> Triangular V-brace
<b>Product accessories</b>	4-in-1 bathroom ceiling heater with light, heat, ventilation, and fan	<input type="checkbox"/> Entrance Platform
Support feet matched at the bottom of the product	Branded Smart Toilet	
Lifting rings / Transportation fixtures	Electric Underfloor Heating	
	<b>Hard-Fitted Furniture</b>	
	Wardrobe	
	Shoe Cabinet	



\*Remarks: All designs and specifications are for reference only. Changes may be made without prior notice.

# Capsule house **P7** Configuration



**Model:** P7

**Size(L\*W\*H):**

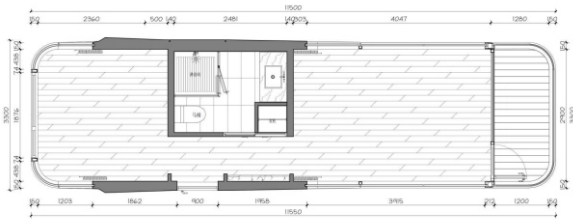
11500\*3300\*3200mm

**Floor Area:** 38.0m<sup>2</sup>

**Number of guests:** 2-4 people

**Maximum Power:** 11.5KW/17KW  
(with floor heating)

**Total Net Weight:** ≈8 tons



\*Product layout plan (for reference only)

## External protection system

Galvanized steel structure frame system

Fluorocarbon sprayed aluminum alloy shell module

Thermal insulation, waterproof and moisture-proof structural system

Three-layer hollow tempered floor-to-ceiling glass

Hollow laminated tempered glass skylight

Painted stainless steel swing entrance door

Panoramic balcony

## Guest control system

Multi-Scenario Mode Function Panel

Lighting / Electric Curtains

Smart Voice Control

Hotel Intelligent Access Control System

## Product accessories

Support feet matched at the bottom of the product

Lifting rings / Transportation fixtures

## Interior Decoration

Integrated Ceiling and Wall Modules

Stone Crystal Wood-Grain Flooring

Bathroom Privacy Glass Door

Bathroom Shower Room/Marble/Tile Floor

Washbasin Counter/Sink/Bathroom Mirror

Coat Hooks/Shower Storage Shelf/Towel Rack

Branded Water Tap/Showerhead/Floor Drain

Whole-House Lighting System

Whole-House Water and Electricity System

Standard Color Blackout Curtains

Air Conditioner (Cooling & Heating)

Electric Water Heater

Ventilation System

Whole-House Mosquito-Proof Screen Doors

4-in-1 bathroom ceiling heater with light, heat, ventilation, and fan

Branded Smart Toilet

Electric Underfloor Heating

## Hard-Fitted Furniture

Wardrobe

## Optional Configurations (Additional Costs Apply)

### 1. Insulation Upgrade

☐ UV-resistant Heat-insulating Explosion-proof Film (High-transparency/Privacy)

☐ Thickened Insulation Layer

### 2. Comfort Upgrade

☐ Projector

### 3. International Kitchen Integrated Customization

☐ Kitchen Cabinets/Wall Cabinets (Including Sink/Water Tap)

☐ Range Hood/Induction Cooker/Refrigerator

### 4. Accessories and Peripherals

☐ Entrance Staircase

☐ Triangular V-brace

☐ Entrance Platform



\*Remarks: All designs and specifications are for reference only. Changes may be made without prior notice.



# Capsule house **Z5** Configuration



**Model:** Z5

**Size(L\*W\*H):**

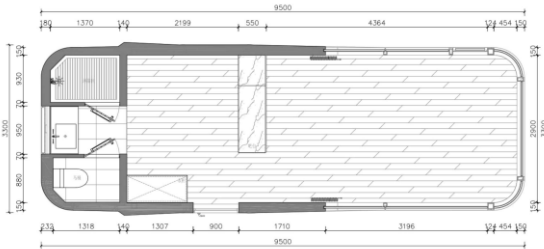
9500\*3300\*3200mm

**Floor Area:** 31.4m<sup>2</sup>

**Number of guests:** 2 people

**Maximum Power:** 7.5KW/12KW  
(with floor heating)

**Total Net Weight:** ≈6.5 tons



\*Product layout plan (for reference only)

## External protection system

Galvanized steel structure frame system

Fluorocarbon sprayed aluminum alloy shell module

Thermal insulation, waterproof and moisture-proof structural system

Three-layer hollow tempered floor-to-ceiling glass

Hollow laminated tempered glass skylight

Painted stainless steel swing entrance door

Panoramic balcony

## Guest control system

Multi-Scenario Mode Function Panel

Lighting / Electric Curtains

Smart Voice Control

Hotel Intelligent Access Control System

## Product accessories

Support feet matched at the bottom of the product

Lifting rings / Transportation fixtures

## Interior Decoration

Integrated Ceiling and Wall Modules

Stone Crystal Wood-Grain Flooring

Bathroom Privacy Glass Door

Bathroom Shower Room/Marble/Tile Floor

Washbasin Counter/Sink/Bathroom Mirror

Coat Hooks/Shower Storage Shelf/Towel Rack

Branded Water Tap/Showerhead/Floor Drain

Whole-House Lighting System

Whole-House Water and Electricity System

Standard Color Blackout Curtains

Air Conditioner (Cooling & Heating)

Electric Water Heater

Ventilation System

Whole-House Mosquito-Proof Screen Doors

4-in-1 bathroom ceiling heater with light, heat, ventilation, and fan

Branded Smart Toilet

Electric Underfloor Heating

## Hard-Fitted Furniture

Wardrobe

Shoe Cabinet

## Optional Configurations (Additional Costs Apply)

### 1. Insulation Upgrade

☐ UV-resistant Heat-insulating Explosion-proof Film (High-transparency/Privacy)

☐ Thickened Insulation Layer

### 2. Comfort Upgrade

☐ Projector

### 3. International Kitchen Integrated Customization

☐ Kitchen Cabinets/Wall Cabinets (Including Sink/Water Tap)

☐ Range Hood/Induction Cooker/Refrigerator

### 4. Accessories and Peripherals

☐ Entrance Staircase

☐ Triangular V-brace

☐ Entrance Platform



\*Remarks: All designs and specifications are for reference only. Changes may be made without prior notice.

# Capsule house **Z7** Configuration



**Model:** Z7

**Size(L\*W\*H):**

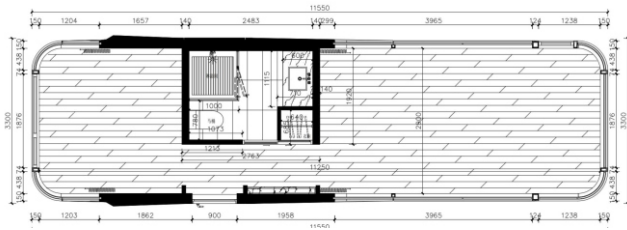
11500\*3300\*3200mm

**Floor Area:** 38.0m<sup>2</sup>

**Number of guests:** 2-4 people

**Maximum Power:** 11.5KW/17KW  
(with floor heating)

**Total Net Weight:** ≈8 tons



\*Product layout plan (for reference only)

## External protection system

Galvanized steel structure frame system

Fluorocarbon sprayed aluminum alloy shell module

Thermal insulation, waterproof and moisture-proof structural system

Three-layer hollow tempered floor-to-ceiling glass

Hollow laminated tempered glass skylight

Painted stainless steel swing entrance door

Panoramic balcony

## Guest control system

Multi-Scenario Mode Function Panel

Lighting / Electric Curtains

Smart Voice Control

Hotel Intelligent Access Control System

## Product accessories

Support feet matched at the bottom of the product

Lifting rings / Transportation fixtures

## Interior Decoration

Integrated Ceiling and Wall Modules

Stone Crystal Wood-Grain Flooring

Bathroom Privacy Glass Door

Bathroom Shower Room/Marble/Tile Floor

Washbasin Counter/Sink/Bathroom Mirror

Coat Hooks/Shower Storage Shelf/Towel Rack

Branded Water Tap/Showerhead/Floor Drain

Whole-House Lighting System

Whole-House Water and Electricity System

Standard Color Blackout Curtains

Air Conditioner (Cooling & Heating)

Electric Water Heater

Ventilation System

Whole-House Mosquito-Proof Screen Doors

4-in-1 bathroom ceiling heater with light, heat, ventilation, and fan

Branded Smart Toilet

Electric Underfloor Heating

## Hard-Fitted Furniture

Wardrobe

## Optional Configurations (Additional Costs Apply)

### 1. Insulation Upgrade

☐ UV-resistant Heat-insulating Explosion-proof Film (High-transparency/Privacy)

☐ Thickened Insulation Layer

### 2. Comfort Upgrade

☐ Projector

### 3. International Kitchen Integrated Customization

☐ Kitchen Cabinets/Wall Cabinets (Including Sink/Water Tap)

☐ Range Hood/Induction Cooker/Refrigerator

### 4. Accessories and Peripherals

☐ Entrance Staircase

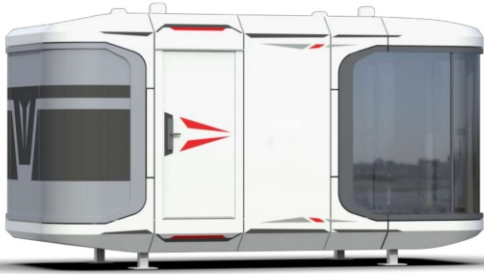
☐ Triangular V-brace

☐ Entrance Platform



\*Remarks: All designs and specifications are for reference only. Changes may be made without prior notice.

# Capsule house **E3-II** Configuration



**Model:** E3- II

**Size(L\*W\*H):**

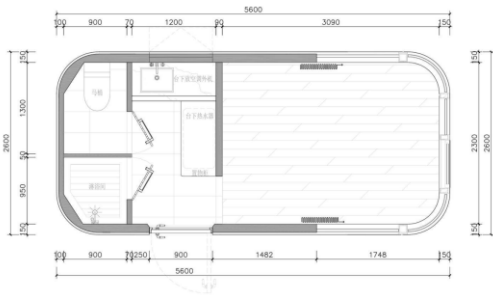
5600\*2600\*3200mm

**Floor Area:** 14.6m<sup>2</sup>

**Number of guests:** 2 people

**Maximum Power:** 6.7KW/8.2KW  
(with floor heating)

**Total Net Weight:** ≈4 tons



\*Product layout plan (for reference only)

## External protection system

Galvanized steel structure frame system

Fluorocarbon sprayed aluminum alloy shell module

Thermal insulation, waterproof and moisture-proof structural system

Three-layer hollow tempered floor-to-ceiling glass

Standard swing entrance door

## Guest control system

Lighting / Electric curtains

Intelligent access control system for hotels

## Product accessories

Support feet matched at the bottom of the product

Lifting rings / Transportation fixtures

## Interior Decoration

Integrated Ceiling and Wall Modules

Stone Crystal Wood-Grain Flooring

Bathroom Privacy Glass Door

Bathroom Shower Room/Marble/Tile Floor

Washbasin Counter/Sink/Bathroom Mirror

Coat Hooks/Shower Storage Shelf/Towel Rack

Branded Water Tap/Showerhead/Floor Drain

Whole-House Lighting System

Whole-House Water and Electricity System

Standard Color Blackout Curtains

Air Conditioner (Cooling & Heating)

Electric Water Heater

Ventilation System

Whole-House Mosquito-Proof Screen Doors

Lighting Ventilation Fan

Branded Smart Toilet

Electric Underfloor Heating

## Optional Configurations (Additional Costs Apply)

### 1. Insulation Upgrade

☐ UV-resistant Heat-insulating Explosion-proof Film (High-transparency/Privacy)

☐ Thickened Insulation Layer

### 2. Comfort Upgrade

☐ Smart Voice System

☐ Starry Sky Skylight

### 3. Accessories and Peripherals

☐ Entrance Staircase

☐ Triangular V-brace

☐ Entrance Platform



**\*Remarks:** All designs and specifications are for reference only. Changes may be made without prior notice.



# Capsule house **E5-II** Configuration



**Model:** E5- II

**Size(L\*W\*H):**

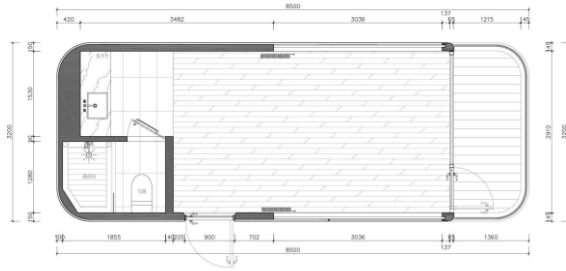
8500\*3200\*3200mm

**Floor Area:** 27.2m<sup>2</sup>

**Number of guests:** 2 people

**Maximum Power:** 6.7KW/8.2KW  
(with floor heating)

**Total Net Weight:** ≈6.5 tons



\*Product layout plan (for reference only)

## External protection system

Galvanized steel structure frame system

Fluorocarbon sprayed aluminum alloy shell module

Thermal insulation, waterproof and moisture-proof structural system

Three-layer hollow tempered floor-to-ceiling glass

Hollow laminated tempered glass skylight

Painted stainless steel swing entrance door

Panoramic balcony

## Guest control system

Lighting / Electric curtains

Intelligent access control system for hotels

## Product accessories

Support feet matched at the bottom of the product

Lifting rings / Transportation fixtures

## Interior Decoration

Integrated Ceiling and Wall Modules

Stone Crystal Wood-Grain Flooring

Bathroom Privacy Glass Door

Bathroom Shower Room/Marble/Tile Floor

Washbasin Counter/Sink/Bathroom Mirror

Coat Hooks/Shower Storage Shelf/Towel Rack

Branded Water Tap/Showerhead/Floor Drain

Whole-House Lighting System

Whole-House Water and Electricity System

Standard Color Blackout Curtains

Air Conditioner (Cooling & Heating)

Electric Water Heater

Ventilation System

Whole-House Mosquito-Proof Screen Doors

Lighting Ventilation Fan

Branded Smart Toilet

Electric Underfloor Heating

## Optional Configurations (Additional Costs Apply)

### 1. Insulation Upgrade

☐ UV-resistant Heat-insulating Explosion-proof Film (High-transparency/Privacy)

☐ Thickened Insulation Layer

### 2. Comfort Upgrade

☐ Custom bar counter

☐ Smart voice system

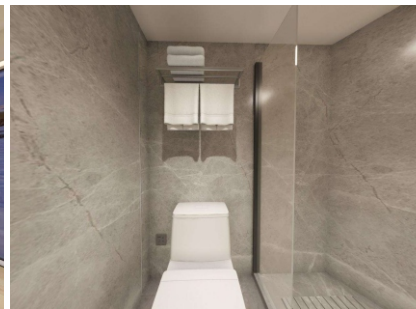
☐ Projector

### 3. Accessories and Peripherals

☐ Entrance Staircase

☐ Triangular V-brace

☐ Entrance Platform



\*Remarks: All designs and specifications are for reference only. Changes may be made without prior notice.

# Capsule house E6-II Configuration



**Model:** E6- II

**Size(L\*W\*H):**

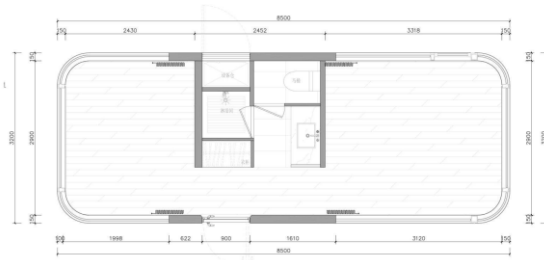
8500\*3200\*3200mm

**Floor Area:** 27.2m<sup>2</sup>

**Number of guests:** 2 people

**Maximum Power:** 6.7KW/8.2KW  
(with floor heating)

**Total Net Weight:** ≈6.5 tons



\*Product layout plan (for reference only)

## External protection system

Galvanized steel structure frame system

Fluorocarbon sprayed aluminum alloy shell module

Thermal insulation, waterproof and moisture-proof structural system

Three-layer hollow tempered floor-to-ceiling glass

Hollow laminated tempered glass skylight

Painted stainless steel swing entrance door

## Guest control system

Lighting / Electric curtains

Intelligent access control system for hotels

## Product accessories

Support feet matched at the bottom of the product

Lifting rings / Transportation fixtures

## Interior Decoration

Integrated Ceiling and Wall Modules

Stone Crystal Wood-Grain Flooring

Bathroom Privacy Glass Door

Bathroom Shower Room/Marble/Tile Floor

Washbasin Counter/Sink/Bathroom Mirror

Coat Hooks/Shower Storage Shelf/Towel Rack

Branded Water Tap/Showerhead/Floor Drain

Whole-House Lighting System

Whole-House Water and Electricity System

Standard Color Blackout Curtains

Air Conditioner (Cooling & Heating)

Electric Water Heater

Ventilation System

Whole-House Mosquito-Proof Screen Doors

4-in-1 bathroom ceiling heater with light, heat, ventilation, and fan

Branded Smart Toilet

Electric Underfloor Heating

## Optional Configurations (Additional Costs Apply)

### 1. Insulation Upgrade

☐ UV-resistant Heat-insulating Explosion-proof Film (High-transparency/Privacy)

☐ Thickened Insulation Layer

### 2. Comfort Upgrade

☐ Custom bar counter

☐ Smart voice system

☐ Projector

### 3. International Kitchen Integrated Customization

☐ Kitchen Cabinets/Wall Cabinets (Including Sink/Water Tap)

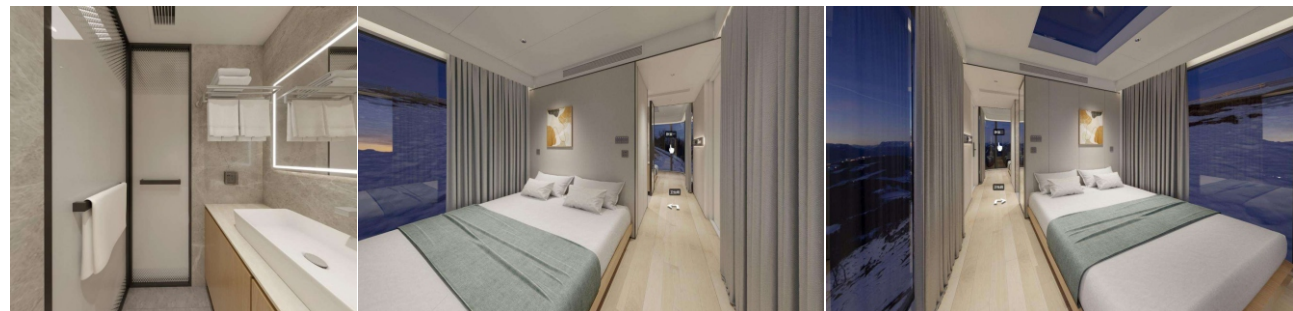
☐ Range Hood/Induction Cooker/Refrigerator

### 4. Accessories and Peripherals

☐ Entrance Staircase

☐ Triangular V-brace

☐ Entrance Platform



\*Remarks: All designs and specifications are for reference only. Changes may be made without prior notice.

# Capsule house **E7-II** Configuration



**Model:** E7- II

**Size(L\*W\*H):**

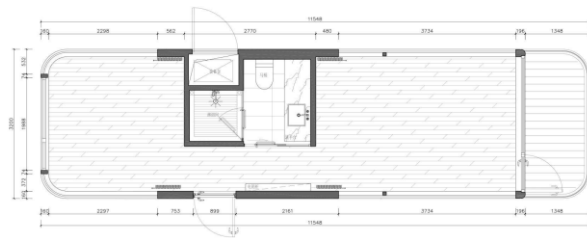
11500\*3200\*3200mm

**Floor Area:** 36.8m<sup>2</sup>

**Number of guests:** 2-4 people

**Maximum Power:** 9.9KW/11.3KW  
(with floor heating)

**Total Net Weight:** ≈8 tons



\*Product layout plan (for reference only)

## External protection system

Galvanized steel structure frame system

Fluorocarbon sprayed aluminum alloy shell module

Thermal insulation, waterproof and moisture-proof structural system

Three-layer hollow tempered floor-to-ceiling glass

Hollow laminated tempered glass skylight

Painted stainless steel swing entrance door

Panoramic balcony

## Guest control system

Lighting / Electric curtains

Intelligent access control system for hotels

## Product accessories

Support feet matched at the bottom of the product

Lifting rings / Transportation fixtures

## Interior Decoration

Integrated Ceiling and Wall Modules

Stone Crystal Wood-Grain Flooring

Bathroom Privacy Glass Door

Bathroom Shower Room/Marble/Tile Floor

Washbasin Counter/Sink/Bathroom Mirror

Coat Hooks/Shower Storage Shelf/Towel Rack

Branded Water Tap/Showerhead/Floor Drain

Whole-House Lighting System

Whole-House Water and Electricity System

Standard Color Blackout Curtains

Air Conditioner (Cooling & Heating)

Electric Water Heater

Ventilation System

Whole-House Mosquito-Proof Screen Doors

4-in-1 bathroom ceiling heater with light, heat, ventilation, and fan

Branded Smart Toilet

Electric Underfloor Heating

## Optional Configurations (Additional Costs Apply)

### 1. Insulation Upgrade

☐ UV-resistant Heat-insulating Explosion-proof Film (High-transparency/Privacy)

☐ Thickened Insulation Layer

### 2. Comfort Upgrade

☐ Custom bar counter

☐ Smart voice system

☐ Projector

### 3. International Kitchen Integrated Customization

☐ Kitchen Cabinets/Wall Cabinets (Including Sink/Water Tap)

☐ Range Hood/Induction Cooker/Refrigerator

### 4. Accessories and Peripherals

☐ Entrance Staircase

☐ Triangular V-brace

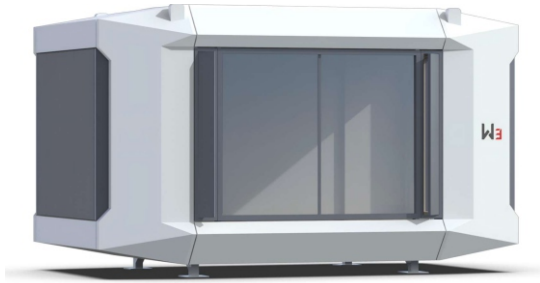
☐ Entrance Platform



\*Remarks: All designs and specifications are for reference only. Changes may be made without prior notice.



# Capsule house **W3** Configuration



**Model:** W3

**Size(L\*W\*H):**

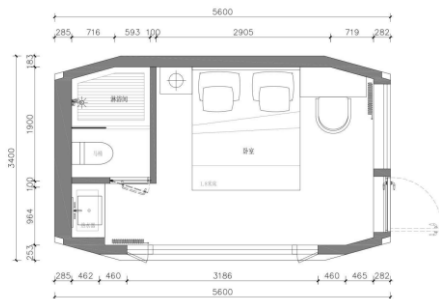
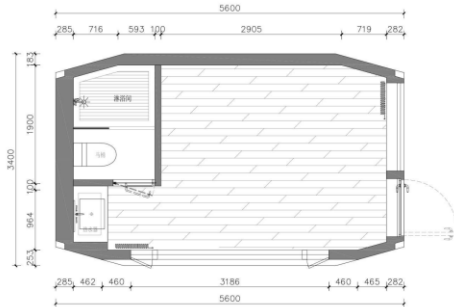
5600\*3400\*3400mm

**Floor Area:** 19.1m<sup>2</sup>

**Number of guests:** 2 people

**Maximum Power:** 6.7KW/11.2KW  
(with floor heating)

**Total Net Weight:** ≈4 tons



\*Product layout plan (for reference only)

## External protection system

Galvanized steel structure frame system

Fluorocarbon sprayed aluminum alloy shell module

Thermal insulation, waterproof and moisture-proof structural system

Three-layer hollow tempered floor-to-ceiling glass

Standard swing entrance door

## Guest control system

Lighting / Electric curtains

Intelligent access control system for hotels

Smart Voice Control

## Product accessories

Support feet matched at the bottom of the product

Lifting rings / Transportation fixtures

## Interior Decoration

Integrated Ceiling and Wall Modules

Stone Crystal Wood-Grain Flooring

Bathroom Privacy Glass Door

Bathroom Shower Room/Marble/Tile Floor

Washbasin Counter/Sink/Bathroom Mirror

Coat Hooks/Shower Storage Shelf/Towel Rack

Branded Water Tap/Showerhead/Floor Drain

Whole-House Lighting System

Whole-House Water and Electricity System

Standard Color Blackout Curtains

Air Conditioner (Cooling & Heating)

Electric Water Heater

Ventilation System

Whole-House Mosquito-Proof Screen Doors

4-in-1 bathroom ceiling heater with light, heat, ventilation, and fan

Branded Smart Toilet

Micro-ventilation window

Electric Underfloor Heating

## Optional Configurations (Additional Costs Apply)

### 1. Insulation Upgrade

☐ UV-resistant Heat-insulating Explosion-proof Film (High-transparency/Privacy)

☐ Thickened Insulation Layer

### 2. Comfort Upgrade

☐ Smart Voice System

☐ Electric towel rack

### 3. Accessories and Peripherals

☐ Entrance Staircase

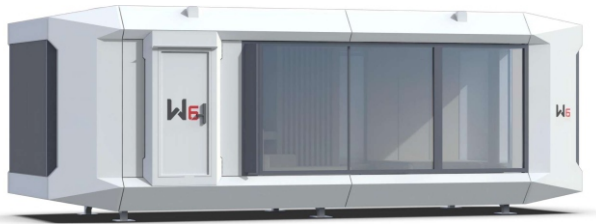
☐ Triangular V-brace

☐ Entrance Platform



**\*Remarks:** All designs and specifications are for reference only. Changes may be made without prior notice.

# Capsule house **W6** Configuration



**Model:** W6

**Size(L\*W\*H):**

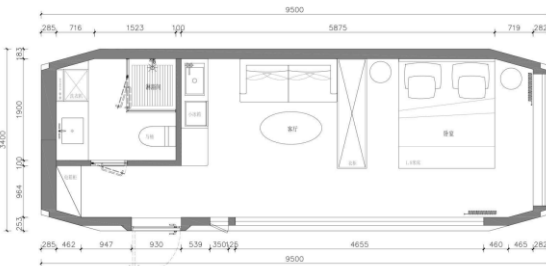
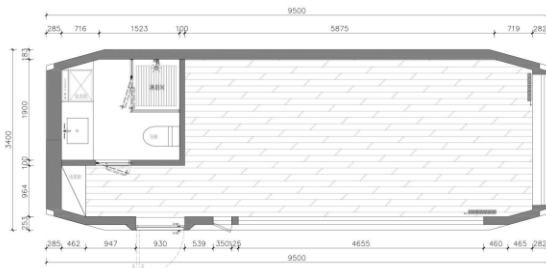
9500\*3400\*3400mm

**Floor Area:** 32.3m<sup>2</sup>

**Number of guests:** 2-4 people

**Maximum Power:** 6.7KW/11.2KW  
(with floor heating)

**Total Net Weight:** ≈6.5 tons



\*Product layout plan (for reference only)

## External protection system

Galvanized steel structure frame system

Fluorocarbon sprayed aluminum alloy shell module

Thermal insulation, waterproof and moisture-proof structural system

Three-layer hollow tempered floor-to-ceiling glass

Standard swing entrance door

## Guest control system

Lighting / Electric curtains

Intelligent access control system for hotels

Smart Voice Control

## Product accessories

Support feet matched at the bottom of the product

Lifting rings / Transportation fixtures

## Interior Decoration

Integrated Ceiling and Wall Modules

Stone Crystal Wood-Grain Flooring

Bathroom Privacy Glass Door

Bathroom Shower Room/Marble/Tile Floor

Washbasin Counter/Sink/Bathroom Mirror

Coat Hooks/Shower Storage Shelf/Towel Rack

Branded Water Tap/Showerhead/Floor Drain

Whole-House Lighting System

Whole-House Water and Electricity System

Standard Color Blackout Curtains

Air Conditioner (Cooling & Heating)

Electric Water Heater

Ventilation System

Whole-House Mosquito-Proof Screen Doors

4-in-1 bathroom ceiling heater with light, heat, ventilation, and fan

Branded Smart Toilet

Micro-ventilation window

Electric Underfloor Heating

## Optional Configurations (Additional Costs Apply)

### 1. Insulation Upgrade

☐ UV-resistant Heat-insulating Explosion-proof Film (High-transparency/Privacy)

☐ Thickened Insulation Layer

### 2. Comfort Upgrade

☐ Custom bar counter/custom wardrobe

☐ Smart voice system

☐ Projector + projection screen

☐ Washing machine

☐ Electric towel rack

### 3. International Kitchen Integrated Customization

☐ Kitchen Cabinets/Wall Cabinets (Including Sink/Water Tap)

☐ Range Hood/Induction Cooker/Refrigerator

### 4. Accessories and Peripherals

☐ Entrance Staircase

☐ Triangular V-brace

☐ Entrance Platform



**\*Remarks:** All designs and specifications are for reference only. Changes may be made without prior notice.

# Capsule house **W9** Configuration



**Model:** W9

**Size(L\*W\*H):**

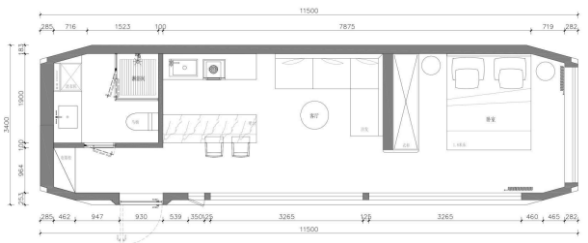
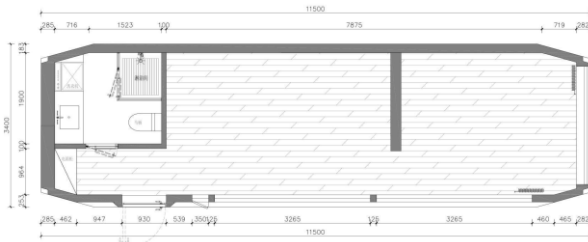
11500\*3400\*3400mm

**Floor Area:** 39.1m<sup>2</sup>

**Number of guests:** 2-4 people

**Maximum Power:** 9.9KW/15.4KW  
(with floor heating)

**Total Net Weight:** ≈8 tons



\*Product layout plan (for reference only)

## External protection system

Galvanized steel structure frame system

Fluorocarbon sprayed aluminum alloy shell module

Thermal insulation, waterproof and moisture-proof structural system

Three-layer hollow tempered floor-to-ceiling glass

Standard swing entrance door

## Guest control system

Lighting / Electric curtains

Intelligent access control system for hotels

Smart Voice Control

## Product accessories

Support feet matched at the bottom of the product

Lifting rings / Transportation fixtures

## Interior Decoration

Integrated Ceiling and Wall Modules

Stone Crystal Wood-Grain Flooring

Bathroom Privacy Glass Door

Bathroom Shower Room/Marble/Tile Floor

Washbasin Counter/Sink/Bathroom Mirror

Coat Hooks/Shower Storage Shelf/Towel Rack

Branded Water Tap/Showerhead/Floor Drain

Whole-House Lighting System

Whole-House Water and Electricity System

Standard Color Blackout Curtains

Air Conditioner (Cooling & Heating)

Electric Water Heater

Ventilation System

Whole-House Mosquito-Proof Screen Doors

4-in-1 bathroom ceiling heater with light, heat, ventilation, and fan

Branded Smart Toilet

Micro-ventilation window

Electric Underfloor Heating

## Optional Configurations (Additional Costs Apply)

### 1. Insulation Upgrade

☐ UV-resistant Heat-insulating Explosion-proof Film (High-transparency/Privacy)

☐ Thickened Insulation Layer

### 2. Comfort Upgrade

☐ Custom bar counter/custom wardrobe

☐ Smart voice system

☐ Projector + projection screen

☐ Washing machine

☐ Electric towel rack

### 3. International Kitchen Integrated Customization

☐ Kitchen Cabinets/Wall Cabinets (Including Sink/Water Tap)

☐ Range Hood/Induction Cooker/Refrigerator

### 4. Accessories and Peripherals

☐ Entrance Staircase

☐ Triangular V-brace

☐ Entrance Platform



**\*Remarks:** All designs and specifications are for reference only. Changes may be made without prior notice.



# Capsule house **A7** Configuration(Service Center)



**Model:** A7(Service Center)

**Size(L\*W\*H):**

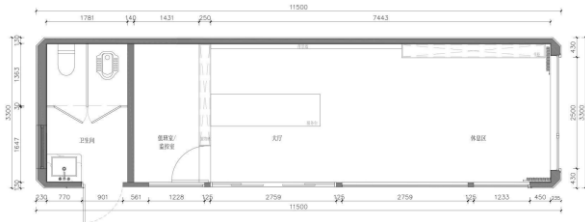
11500\*3300\*3300mm

**Floor Area:** 38.0m<sup>2</sup>

**Number of guests:** 2-4 people

**Maximum Power:** 9.9KW/15.4KW  
(with floor heating)

**Total Net Weight:** ≈8 tons



\*Product layout plan (for reference only)

## External protection system

Galvanized steel structure frame system

Fluorocarbon sprayed aluminum alloy shell module

Thermal insulation, waterproof and moisture-proof structural system

Insulated tempered floor-to-ceiling glass

Insulated laminated tempered glass skylight

Standard swing entrance door

Sliding glass entrance door

## Guest control system

Lighting / Electric curtains

Intelligent access control system for hotels

## Product accessories

Support feet matched at the bottom of the product

Lifting rings / Transportation fixtures

## Interior Decoration

Integrated Ceiling and Wall Modules

Stone Crystal Wood-Grain Flooring

Bathroom Swing Doors (2 units)

Bathroom/Marble/Tile Floor

Washbasin Counter/Sink/Bathroom Mirror

Coat Hooks

Branded Water Tap/Floor Drain

Whole-House Lighting System

Whole-House Water and Electricity System

Standard Color Blackout Curtains

Split-Type Air Conditioners (2P + 1.5P Wall-Mounted Units)

Ventilation System

Whole-House Mosquito-Proof Screens

Branded Toilets (One Squat Toilet and One Sitting Toilet)

Lounge Swing Door

## Hard-Fitted Furniture

Custom front desk

Custom wall cabinet

## Optional Configurations (Additional Costs Apply)

### 1. Insulation Upgrade

- ☐ Water Supply Pipe Electric Auxiliary Heating System
- ☐ Thickened Insulation Layer
- ☐ Electric Underfloor Heating
- ☐ Three-Layer Insulated Tempered Floor-to-Ceiling Glass
- ☐ UV-Resistant Heat Insulation Explosion-Proof Film (High Transparency/Privacy)

### 2. Comfort Upgrade

- ☐ Smart voice system
- ☐ Projector + projection screen

### 3. Accessories and Peripherals

- ☐ Entrance Staircase
- ☐ Triangular V-brace
- ☐ Entrance Platform



\*Remarks: All designs and specifications are for reference only. Changes may be made without prior notice.

# Capsule house **A9** Configuration(Dining Room)



**Model:** A9(Dining Room)

**Size(L\*W\*H):**

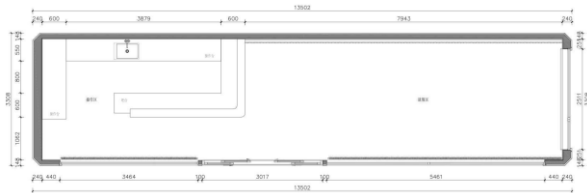
13500\*3300\*3300mm

**Floor Area:** 44.6m<sup>2</sup>

**Number of guests:** 2-4 people

**Maximum Power:** 11.5KW/17KW  
(with floor heating)

**Total Net Weight:** ≈9 tons



\*Product layout plan (for reference only)

## External protection system

Galvanized steel structure frame system

Fluorocarbon sprayed aluminum alloy shell module

Thermal insulation, waterproof and moisture-proof structural system

Insulated tempered floor-to-ceiling glass

Insulated laminated tempered glass skylight

Standard swing entrance door

Sliding glass entrance door

## Guest control system

Lighting / Electric curtains

Intelligent access control system for hotels

## Product accessories

Support feet matched at the bottom of the product

Lifting rings / Transportation fixtures

## Interior Decoration

Integrated Ceiling and Wall Modules

Stone Crystal Wood-Grain Flooring

Tile Floor in Bar Area

Sink/Water Tap/Range Hood

Coat Hooks/Shower Storage Shelf

Branded Water Tap/Floor Drain

Whole-House Lighting System

Whole-House Water and Electricity System

Sunshade Roller Blind

Split-Type Air Conditioner (Cooling & Heating)

Ventilation System

Whole-House Mosquito-Proof Screens

## Hard-Fitted Furniture

Custom Bar Counter/Display Wall Cabinets

Custom Kitchen Countertop/Wall Cabinets

## Optional Configurations (Additional Costs Apply)

### 1. Insulation Upgrade

- ☐ Water Supply Pipe Electric Auxiliary Heating System
- ☐ Thickened Insulation Layer
- ☐ Electric Underfloor Heating
- ☐ Three-Layer Insulated Tempered Floor-to-Ceiling Glass
- ☐ UV-Resistant Heat Insulation Explosion-Proof Film (High Transparency/Privacy)

### 2. Comfort Upgrade

- ☐ Smart voice system
- ☐ Projector + projection screen

### 3. Accessories and Peripherals

- ☐ Entrance Staircase
- ☐ Triangular V-brace
- ☐ Entrance Platform



\*Remarks: All designs and specifications are for reference only. Changes may be made without prior notice.

# AE23-A Disassembled Version Configuration



**Model:** AE23-A

**Size(L\*W\*H):**

6500\*3480\*3300mm

**Floor Area:** 23.0m<sup>2</sup>

**Total Net Weight:** ≈4.3 tons



\*Product layout plan (for reference only)

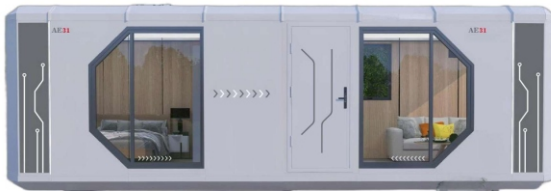
Roof Module	Bottom Module	Optional Configurations (Additional Costs Apply)
Roof aluminum plate with PVDF coating	Shell aluminum plate with PVDF coating	<b>1. Comfort Upgrades</b> <ul style="list-style-type: none"> <li><input type="checkbox"/> Air conditioner</li> <li><input type="checkbox"/> Kitchen and kitchen appliances</li> </ul>
Light steel keel frame	Light steel keel frame	
Ceiling aluminum plate	Injection of flame-retardant PIR insulating thermal insulation material	
Module broken bridge thermal insulation	Internal color steel plate	
Solar panel mounting clips	Broken bridge thermal insulation aluminum profile module	
Embedded wiring pipes	Embedded wiring pipes	<b>2. Accessories and Peripherals</b> <ul style="list-style-type: none"> <li><input type="checkbox"/> Electrical, Wiring and Lighting</li> <li><input type="checkbox"/> Solar System</li> <li><input type="checkbox"/> Water Tank</li> </ul>
Injection of PIR flame-retardant insulating thermal insulation material	Structural floor module	
	Finished floor	
	Hot-dip galvanized steel base	
Wall Module	Indoor Fine Decoration	
Shell Aluminum Plate	Insulated Low-E Tempered Glass	
Light Steel Galvanized Structural Frame	SMC Modular Bathroom	
Injection of PIR Flame-Retardant Insulating Thermal Insulation Material	Toilet and water tank, bathroom vanity, wall cabinet	
Decorative Wall Panel: 8mm Thick Carbon Crystal Panel	Shower faucet and shower rod, towel rack	
Module Broken Bridge Thermal Insulation	Exhaust fan, LED lights, floor drain	
Embedded Wiring Pipes		



**\*Remarks:** All designs and specifications are for reference only. Changes may be made without prior notice.



# AE31-A Disassembled Version Configuration



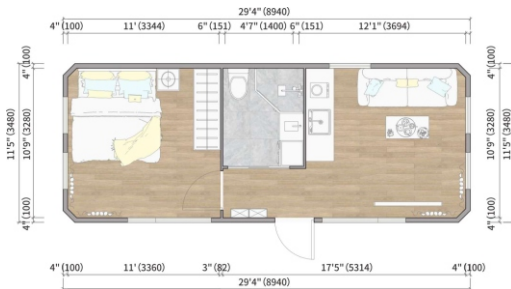
**Model:** AE31-A

**Size(L\*W\*H):**

8940\*3480\*3300mm

**Floor Area:** 31.1 m<sup>2</sup>

**Total Net Weight:** ≈5.5 tons



\*Product layout plan (for reference only)

## Roof Module

Roof aluminum plate with PVDF coating

Light steel keel frame

Ceiling aluminum plate

Module broken bridge thermal insulation

Solar panel mounting clips

Embedded wiring pipes

Injection of PIR flame-retardant insulating thermal insulation material

## Wall Module

Shell Aluminum Plate

Light Steel Galvanized Structural Frame

Injection of PIR Flame-Retardant Insulating Thermal Insulation Material

Decorative Wall Panel: 8mm Thick Carbon Crystal Panel

Module Broken Bridge Thermal Insulation

Embedded Wiring Pipes

## Bottom Module

Shell aluminum plate with PVDF coating

Light steel keel frame

Injection of flame-retardant PIR insulating thermal insulation material

Internal color steel plate

Broken bridge thermal insulation aluminum profile module

Embedded wiring pipes

Structural floor module

Finished floor

Hot-dip galvanized steel base

## Indoor Fine Decoration

Insulated Low-E Tempered Glass

SMC Modular Bathroom

Toilet and water tank, bathroom vanity, wall cabinet

Shower faucet and shower rod, towel rack

Exhaust fan, LED lights, floor drain

## Optional Configurations (Additional Costs Apply)

### 1. Comfort Upgrades

- ☐ Air conditioner
- ☐ Kitchen and kitchen appliances

### 2. Accessories and Peripherals

- ☐ Electrical, Wiring and Lighting
- ☐ Solar System
- ☐ Water Tank



\*Remarks: All designs and specifications are for reference only. Changes may be made without prior notice.

# AE31-B Disassembled Version Configuration



**Model:** AE31-B

**Size(L\*W\*H):**

8940\*3480\*3300mm

**Floor Area:** 31.1 m<sup>2</sup>

**Total Net Weight:** ≈5.5 tons



\*Product layout plan (for reference only)

Roof Module	Bottom Module	Optional Configurations (Additional Costs Apply)
Roof aluminum plate with PVDF coating	Shell aluminum plate with PVDF coating	<b>1. Comfort Upgrades</b> <input type="checkbox"/> Air conditioner <input type="checkbox"/> Kitchen and kitchen appliances
Light steel keel frame	Light steel keel frame	
Ceiling aluminum plate	Injection of flame-retardant PIR insulating thermal insulation material	
Module broken bridge thermal insulation	Internal color steel plate	
Solar panel mounting clips	Broken bridge thermal insulation aluminum profile module	
Embedded wiring pipes	Embedded wiring pipes	<b>2. Accessories and Peripherals</b> <input type="checkbox"/> Electrical, Wiring and Lighting <input type="checkbox"/> Solar System <input type="checkbox"/> Water Tank
Injection of PIR flame-retardant insulating thermal insulation material	Structural floor module	
	Finished floor	
	Hot-dip galvanized steel base	
Wall Module	Indoor Fine Decoration	
Shell Aluminum Plate	Insulated Low-E Tempered Glass	
Light Steel Galvanized Structural Frame	SMC Modular Bathroom	
Injection of PIR Flame-Retardant Insulating Thermal Insulation Material	Toilet and water tank, bathroom vanity, wall cabinet	
Decorative Wall Panel: 8mm Thick Carbon Crystal Panel	Shower faucet and shower rod, towel rack	
Module Broken Bridge Thermal Insulation	Exhaust fan, LED lights, floor drain	
Embedded Wiring Pipes		



\*Remarks: All designs and specifications are for reference only. Changes may be made without prior notice.

# AE40-A Disassembled Version Configuration



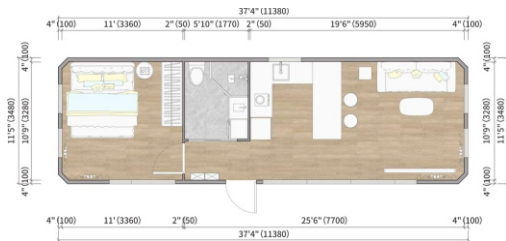
**Model:** AE40-A

**Size(L\*W\*H):**

11380\*3480\*3300mm

**Floor Area:** 39.6m<sup>2</sup>

**Total Net Weight:** ≈6.7 tons



\*Product layout plan (for reference only)

## Roof Module

Roof aluminum plate with PVDF coating

Light steel keel frame

Ceiling aluminum plate

Module broken bridge thermal insulation

Solar panel mounting clips

Embedded wiring pipes

Injection of PIR flame-retardant insulating thermal insulation material

## Wall Module

Shell Aluminum Plate

Light Steel Galvanized Structural Frame

Injection of PIR Flame-Retardant Insulating Thermal Insulation Material

Decorative Wall Panel: 8mm Thick Carbon Crystal Panel

Module Broken Bridge Thermal Insulation

Embedded Wiring Pipes

## Bottom Module

Shell aluminum plate with PVDF coating

Light steel keel frame

Injection of flame-retardant PIR insulating thermal insulation material

Internal color steel plate

Broken bridge thermal insulation aluminum profile module

Embedded wiring pipes

Structural floor module

Finished floor

Hot-dip galvanized steel base

## Indoor Fine Decoration

Insulated Low-E Tempered Glass

SMC Modular Bathroom

Toilet and water tank, bathroom vanity, wall cabinet

Shower faucet and shower rod, towel rack

Exhaust fan, LED lights, floor drain

## Optional Configurations (Additional Costs Apply)

### 1. Comfort Upgrades

- ☐ Air conditioner
- ☐ Kitchen and kitchen appliances

### 2. Accessories and Peripherals

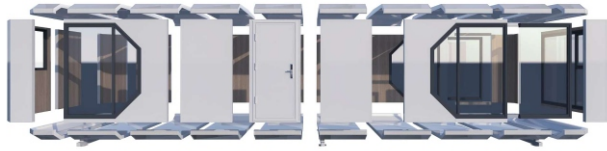
- ☐ Electrical, Wiring and Lighting
- ☐ Solar System
- ☐ Water Tank



\*Remarks: All designs and specifications are for reference only. Changes may be made without prior notice.



# AE40-B Disassembled Version Configuration



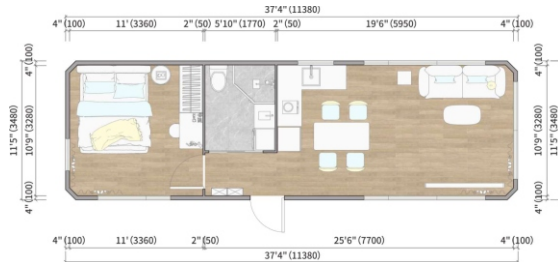
**Model:** AE40-B

**Size(L\*W\*H):**

11380\*3480\*3300mm

**Floor Area:** 39.6m<sup>2</sup>

**Total Net Weight:** ≈6.7 tons



\*Product layout plan (for reference only)

## Roof Module

Roof aluminum plate with PVDF coating

Light steel keel frame

Ceiling aluminum plate

Module broken bridge thermal insulation

Solar panel mounting clips

Embedded wiring pipes

Injection of PIR flame-retardant insulating thermal insulation material

## Wall Module

Shell Aluminum Plate

Light Steel Galvanized Structural Frame

Injection of PIR Flame-Retardant Insulating Thermal Insulation Material

Decorative Wall Panel: 8mm Thick Carbon Crystal Panel

Module Broken Bridge Thermal Insulation

Embedded Wiring Pipes

## Bottom Module

Shell aluminum plate with PVDF coating

Light steel keel frame

Injection of flame-retardant PIR insulating thermal insulation material

Internal color steel plate

Broken bridge thermal insulation aluminum profile module

Embedded wiring pipes

Structural floor module

Finished floor

Hot-dip galvanized steel base

## Indoor Fine Decoration

Insulated Low-E Tempered Glass

SMC Modular Bathroom

Toilet and water tank, bathroom vanity, wall cabinet

Shower faucet and shower rod, towel rack

Exhaust fan, LED lights, floor drain

## Optional Configurations (Additional Costs Apply)

### 1. Comfort Upgrades

- ☐ Air conditioner
- ☐ Kitchen and kitchen appliances

### 2. Accessories and Peripherals

- ☐ Electrical, Wiring and Lighting
- ☐ Solar System
- ☐ Water Tank



\*Remarks: All designs and specifications are for reference only. Changes may be made without prior notice.